



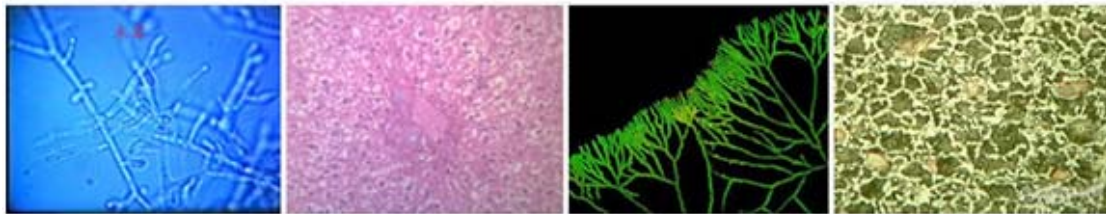
A59.3510 9.7' LCD Pad Digital Camera, Android System



A59.3510 9.7" LCD Pad Digital Camera, Android



A59.3510 9.7" LCD Pad Digital Camera, Android



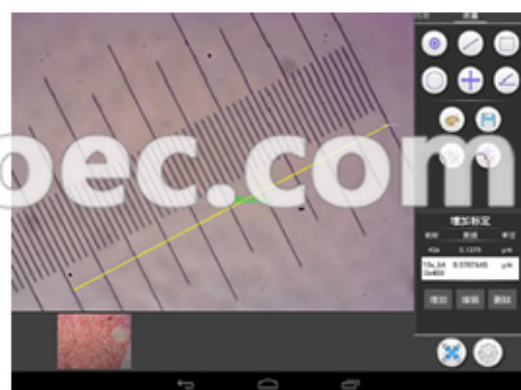
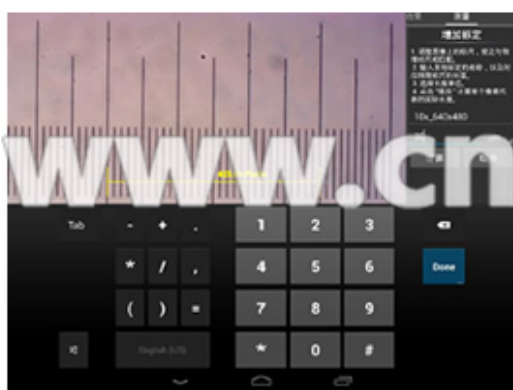
A59.3510 9.7" LCD Pad Digital Camera, Android



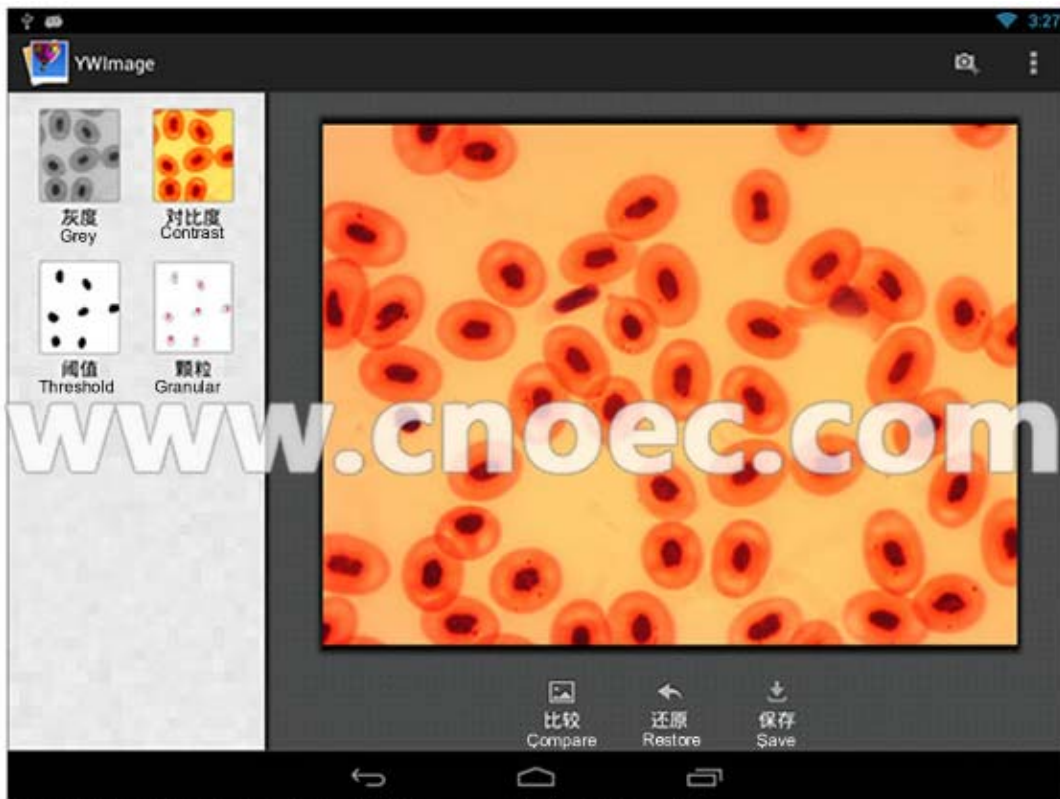
Packing Box



AC100~240V Wide Voltage Power Adapter



A59.3510 9.7" LCD Pad Digital Camera, Android System
Built-in YW Camera Software, Can Take Photo, Capture Video,
Measure Length, Angle And Etc.



A59.3510 9.7" LCD Pad Digital Camera, Android System
Built-in YW Image Software, Can Adjust Grey, Contrast, Threshold to Measure Granular



A59.3510 9.7" LCD Pad Digital Camera, Android System
All Kinds Measuring Tools, Easy To Use



Features:

A59.3510 9.7" Pad Digital Camera, Newly Developed In 2014. With the excellent digital image processing technology, its imaging effect is gorgeous and can beat the image processed by CCD camera. This new generation smart digital microscopic camera is upgraded to 5.0M resolution and 720P dynamic video record is supported. Equipped with the most stable hardware and software system, binding professional multi-functional measuring software, which is R&D by ourselves, it is easily to achieve to all your desire of exploration and discovery mystery of the microscopic kingdom.

- 9.7" HD Diagonal IPS LCD, Backlight Screen, Resolution 1024*768
- 5.0M Pixels, Maximum Photo Resolution 2592*1944
- Android 4.2 System, Multi Language
- 1.6GHz Four Core ARM Mali-400 MP GPU
- HDMI, Mini USB2.0, USB 2.0



Detail Specification:

[Print](#) [Price information](#)

A59.3510 9.7" LCD Pad Digital Camera, Specification of LCD & Camera

LCD	9.7" HD Diagonal IPS LCD, Backlight Screen, Resolution 1024*768 Five Point Touch Screen, With Hardware Power Switch
Resolution	5.0M Pixels, Maximum Photo Resolution 2592*1944
Senser	1/2.5" CMOS, Color, Aptina MT9P001
Effective Image Size	5.70(H) * 4.28(V)mm, 7.23mm (Diagonal)
Frame Rate	1280*720/15 Fps, 640*480/30Fps
Pixel Size	2.2*2.2 um
Dynamic Range	66.5dB
SNR	40.5dB Max
ADC	12 Bit, On Chip
Shutter Type	ERS, Auto
White Balance	Auto
Connect	Standard C-Mount Interface

A59.3510 9.7" LCD Pad Digital Camera, Specification of Pad

CPU	1.6GHz Four Core ARM Mali-400 MP GPU Support OpenGL ES 1.1/2.0 And OpenVG 1.1 Support Full HD 1080p Support Android 4.2 System
RAM	2GB, Support DDR3, DDR2, LPDDR2
Data Storage	SD Card Slot, Support Max 32GB C10 High Speed SD Card
Data Interface	HDMI, Mini USB2.0, USB 2.0
Operation System	Android 4.2 System, Multi Language
Button	Power Switch
Power	External Power Adaptor, Wide Voltage AC 100~240V, DC 5V/2A Power Mode : Normal, Sleep, Power Off
WIFI	Support WIFI, Support Bluetooth
Software	YX Camera Installed, --Can Adjust Real Time Image --Can Measure Length, Area, Angle, Count --Can Take Picture, Record Video YX Image Installed --Grey, Contrast, Brightness Adjust --Binary Image For Granular Count Both Software Chinese/English Version, With Instruction Manual Installed
Product Size	Pad 17.5*22.5*2.0cm
Package Size	Packing Box 10*24*29cm, 1 pc/Box