

Multi Growth Chamber



Feature

Microprocessor PID Control

Provides high precision temperature, relative humidity and illumination control for uniform and stable growth environment

10 Step Program with PC Interface

Controller provides automatic operation of various programmed cycles and maximum 999 cycles PC software for monitoring and data logging

Self-Diagnostic and Alarm system

Automatically check any malfunction or errors and visible alarm system

Forced Air Circulation System

Silent and durable fan motors to maintain uniform temperature and humidity by air circulation from down to top air flow direction

Automatic water supply system

Distilled water or de-ionized water with water purifier is supplied by built-in reservoir at chamber

Lamp-on-Delay System

Protects plants from stress by preventing sudden change of light strength and switch on / off time control

Technical Design and Structure

Complete sealed stainless steel chamber with light transferable inner tempered safety glass door with solid out door

Non-CFC/HCFC Refrigeration System

CFC / HCFC-free Hermetically sealed compressor and eco-friendly refrigerant gas are used for compliance with the New Environmental Regulation

Light Bank System (Option)

With 8 step programmable control up to 35,000 Lux available various lamp selection

Lab-Dog DVR System (Option)

Video recording and monitoring with Internet system



Optional Controller



120 Patterns / 1,200 Segments

- Monitoring on PC Software
- Remote operation & editing programs
- Graph & Data acquisition
- Converting saved data to spreadsheet

Dual Chamber Structure

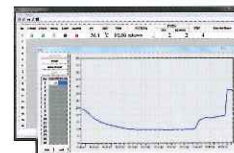
Microprocessor Programmable PID Control with PC Software System



Monitoring 16 channel
Connected into 1 Computers
with Labtech Hub Software

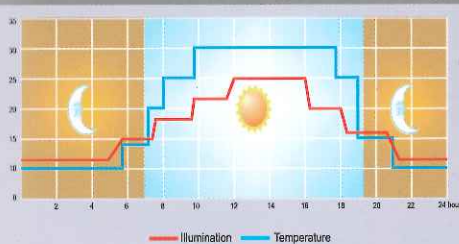


Data Logging and Recording
time and temperature shown
set value and present value

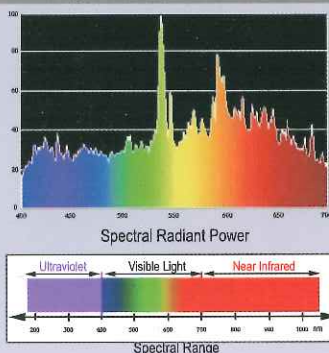


Graphic monitoring for step
programmed process of time
and temperature on real-time

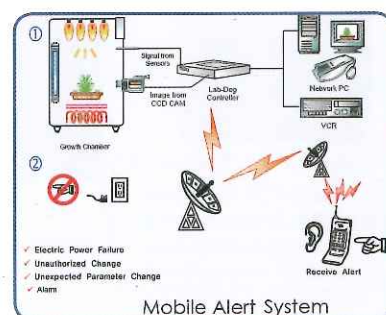
Programmable Operation Cycle



Programmable Temperature, Humidity,
Illumination for 24 hour cycle



Lab-Dog DVR System (Option)



MODEL		LGC-2101D	LGC-2102D
Dimensions (W x D x H mm)	Inner	650 x 600 x 600 x 2 rooms	982 x 580 x 500 x 2 rooms
	Outer	1238 x 880 x 1970	1830 x 860 x 1970
Capacity		234 ℓ x 2 room , 468 ℓ	285 ℓ x 2 room , 570 ℓ
Controller		Microprocessor PID Program Controller with Alarm System 10 step program , 999 cycle	
Display		LCD Back Light PV & SV Display	
Temperature		Range 0°C to 60°C (Light Off) / 10°C to 60°C (Light On) Set accuracy $\pm 0.1^{\circ}\text{C}$ / Uniformity : $\pm 1.0^{\circ}\text{C}$ at 20 °C	
Heater		4kW	4kW
Compressor		1HP	1HP
Humidity		Range 30% to 98% RH Set accuracy $\pm 1\%$ / Uniformity : $\pm 2\%$ to 3 % at 60 % RH Evaporation by Fan with Heater	
Illumination	Range	0 to 25,000 Lux (Optional 35,000 Lux)	
	Sensor	Photo Sensor with Flexible Cable	
Material	Interior	Stainless Steel 304	
	Exterior	Epoxy powder coated EGI steel	
Door	Inner	Tempered safety glass door with silicone packing	
	Outer	Magnetic packing solid door	
Electric Supply		110V 60Hz or 220V 50/60 Hz	

Remark : Temp 0°C can be reached without lighting

Option: Lights bank under each shelf, LED special Lamps