

**Material Testing machine- Hydraulic Electric Universal Testing Machine controlled by PC.  
WAW-600C(Max load is 600KN) (ISO7500-1999)**



**Specification:**

Model No.	WAW-600C(Full computer controlled hydraulic UTM 600kN)
Machine Type	Piston at foot, two ball screws and two columns
Max Load Capacity	600KN
Standard available test	Bend, tension, compression. etc.
Range of stress under uniform velocity control	2-60
Range of strain under uniform velocity control	0.00025/s-0.0025/s
Range of uniform velocity	0.5-50mm/min
Methods of Clamp	Hydraulic Clamp
Max tension space	600mm
Max compression space	500mm
Net width between two columns	650mm
Range of diameter of Round Specimen	Ø13-Ø40mm
Range of thickness of Flat Specimen	0-30mm
Max width of Flat Specimen	80mm
Dimension of compression board	Ø125mm
Max span between bending rollers	600mm
Max value of bending	100mm
Piston stroke	250mm
Max velocity of piston	80mm/min
Dimension of machine	Mainframe: 1180*750*2633mm
	Control cabinet: 600*480*960mm
	Pc and Accessories:800*500*760mm
Weight(Include package)	Mainframe:3500kg
	Control cabinet: 1500kg
	Pc and Accessories:

**TIME-SHIJIN Controller**  
Plug In ready to use PCI control card, suits all kinds of personal computer and main board. Full digital measure and control circuit provided with Load, displacement & deformation different measuring channel. Close loop control by simply software configuration.



采用贴片技术的试金控制器

**ELECTRIC CABINET**  
Electromagnetic proof cabinet Improve the reliability and stability of the whole electric system.



**UPPER CROSSHEAD**  
Upper crosshead can be adjusted according to the length of test sample

**AUTO HYDRAULIC GRIP**  
Independence wedge action hydraulic grip firmly hold the sample, guarantee the precision of the test

**LOWER CROSSHEAD**  
Lower crosshead is driven by motor and gear to make it move up and down to preset gripping

**OIL CYLINDER**  
Refined high precise oil cylinder secure the stability of load and accuracy of test results distance

## Standard Accessories for WAW 600C

No.	Name	Quantity	Specification
1	Servo oil source	1 set	German Moog valve
2	Clamp oil source	1 set	
3	Control cabinet	1 unit	
4	Control system	1 set	
5	Extensometer	1 unit	YYU-10/50
6	Oil Load cell	1 unit	CYB-12SA
7	Optical encoder	1 unit	LEC-500BM
8	PC(Lenovo)	1 unit	P4/256MDDR/80G/CD-ROM
9	Printer(Hp)	1 set	Hp1468
10	Round specimen grips	1 set	Ø13-Ø26mm, Ø26-Ø40mm
11	Flat specimen grips	1 set	0-15mm, 15-30mm
12	Bending accessories	1 set	
13	Compression accessories	1 set	Ø125mm
14	Tool kit	1 set	
15	Document	1 set	

## Document

- 1 Operation Manual for WAW-600C
- 2 Operation Manual of control software WIN-WAW
- 3 Documents of PC(Lenovo)
- 4 Certification
- 5 Packing list

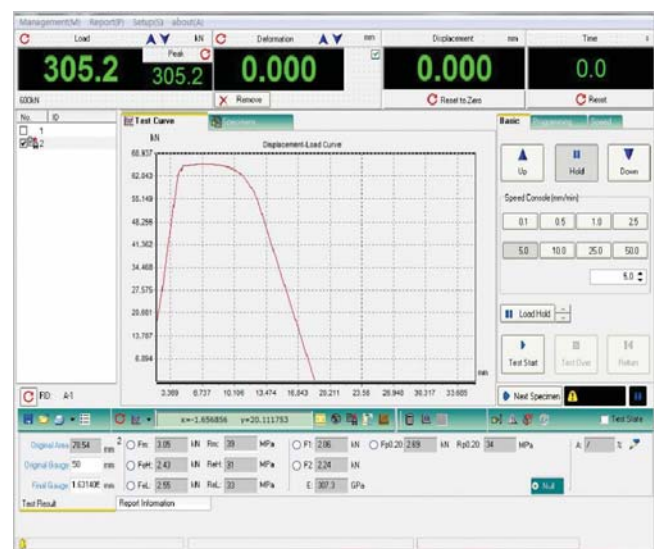
## Win-WAW Software

The software can display the load, deformation and displacement.

It also can display the load-time, load-deformation, load-displacement, deformation-time, displacement-time, stress-strain, stress-time, strain-time curves.

It can realize many kinds of control modes, such as uniform velocity of load, uniform velocity of deformation, uniform velocity of displacement, keep load, keep displacement and so on. The software is adapted to many standards such as GB, ASTM, EN, and so on

The test report can be edited according to the requirements.



**Guarantee: 1 year**